

EALING BEER FESTIVAL 2025

Festival Programme

9th - 12th July



@ealingbeerfest
ebf.camra.org.uk

CAMRA'S FESTIVAL CODE OF CONDUCT

(<https://camra.org.uk/festival-code-of-conduct> - summarised below)

Beer is great, cider and perry are great, and festivals should be a fun place for everyone to enjoy them. CAMRA welcomes all visitors to our festival and seeks to provide an inclusive and welcoming environment in which to enjoy beer and cider, regardless of age, gender, sexual orientation, race, religion, disabilities or socio-economic status.

Anyone who experiences or witnesses comments or behaviour contrary to the Code of Conduct should report it to one of the festival stewards (who can be identified by their bright orange clothing), who will be briefed on handling and reporting complaints, or to the Welfare / First Aid tent, or online at <https://camra.org.uk/feedback-and-complaints>.

The quicker an incident is reported on site, the greater chance there is to identify those involved and resolve the situation. Those found to be in breach of this Code may face an official warning about behaviour or removal from the festival.

LIVE BEER LIST EBF 2025



The carefully crafted programme you are currently holding lists all the beers & ciders that will be available across the entirety of the beer festival.

To view a live list of all the beers currently being served RIGHT NOW please scan the QR code on your phone and select the EBF '25 event.

Live Beer listed supplied by BeerMonitor.co.uk.

WELCOME FROM THE FESTIVAL ORGANISER

Welcome to the 34th Ealing Beer Festival! We're thrilled to offer a diverse selection of Real Ales, Keg Beer, Wines, World Beer, Cider, and Perry for your enjoyment.

This year's logo celebrates the Brent River Park (brentriverpark.org) and its landmarks: Capybara, (honouring Hanwell Zoo's 50th anniversary (hanwellzoo.co.uk)), the River Brent, and Isambard Kingdom Brunel's Wharncliffe Viaduct. This viaduct, carrying the Great Western Railway, also marks the 200th anniversary of the birth of modern railways.

The Ealing Beer Festival would not be possible without the dedicated efforts of our volunteers. A heartfelt thank you to each and every one of them!

The Campaign for Real Ale (CAMRA) champions real ale, cider, and perry within vibrant pubs, and the Ealing Beer Festival serves as a prime example of this. Join CAMRA at the festival and receive two complimentary pints.

With heavy hearts, we mourn the passing of Bill Fever, a dedicated and longstanding volunteer of our branch and beer festival, for numerous years. Bill served as a Bar Manager at the festival, and he played a pivotal role in mentoring a vast number of volunteers. Many of these individuals have continued to contribute to our festival and others.

BEN HART (FESTIVAL ORGANISER)

OUR SPONSORS



wetherspoon

JJ Moon's Ruislip Manor



Perivale
Brewery

Errors and omissions reserved.

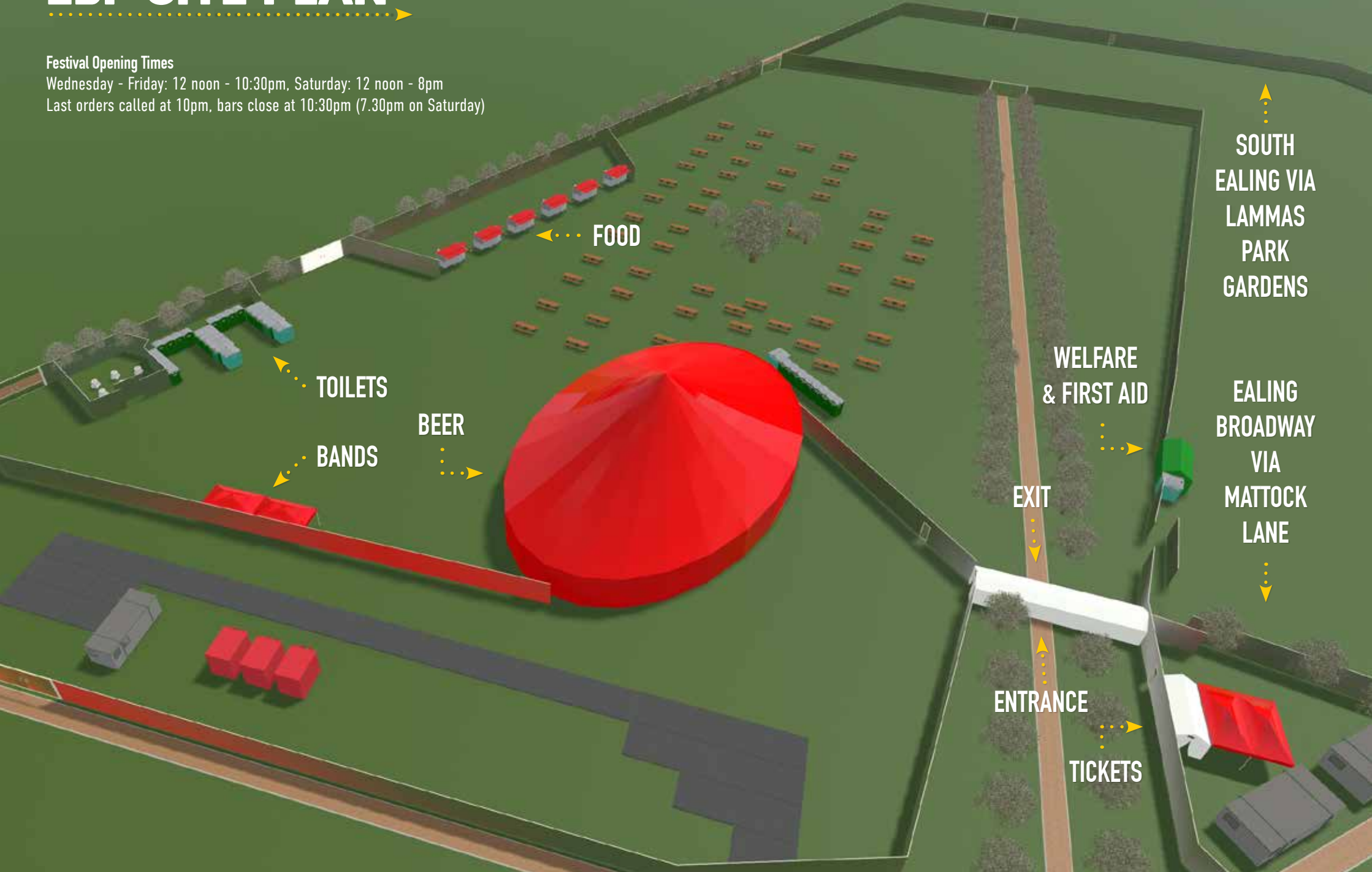
Please ask at the bar for information about dietary restrictions and allergens.

If you've enjoyed your day, you can pay £10 to upgrade to a season ticket and come back on other days.

EBF SITE PLAN

Festival Opening Times

Wednesday - Friday: 12 noon - 10:30pm, Saturday: 12 noon - 8pm
Last orders called at 10pm, bars close at 10:30pm (7.30pm on Saturday)



SOUTH
EALING VIA
LAMMAS
PARK
GARDENS

WELFARE
& FIRST AID

EALING
BROADWAY
VIA
MATTOCK
LANE

FOOD

TOILETS

BEER

BANDS

EXIT

ENTRANCE

TICKETS

FESTIVAL MERCHANDISE

AVAILABLE AT THE PRODUCTS STAND



2025 EBF FESTIVAL LOGO T-SHIRT



FESTIVAL LOGO T-SHIRTS



FESTIVAL LOGO PIN BADGE



2023 BEAVER LOGO PIN BADGE



2022 LIZZIE LINE LOGO PIN BADGES

**THE DODO
MICROPUB**
Ealing & West Middlesex
Pub of The Year 2025
Pop in with this & enjoy 10% off!
We're in Hanwell, W7.
Valid until 31 August 2025.
[@thedodomicropub](https://www.instagram.com/thedodomicropub)

The
HOP & VINE
RUISLIP
- Craft Beer - Real Ale - Fine Wines -
f FOLLOW US 
[@Hopandvinebar](https://www.instagram.com/Hopandvinebar)
18 High Street, Ruislip
Middlesex HA4 7AN

REAL ALES

Welcome to the Real Ale Bar.

We once again bring you a great selection of beers, in many different styles, from all over the UK. Look out for the one-off collaboration beers between two breweries (e.g. Five Points x Turning Point). For the 2nd year, we have brewed our own festival collaboration with Perivale brewery - this time a fruity Watermelon Wheat beer!

How to find a beer?

The beers are in alphabetical order by brewery across our four bars, named A - D. On the bar, each beer cask (barrel) has an A4 size cask label, the colour of which indicates the style, as in the key below. Due to different size beer barrels, and to make as much of the space available you will find some beers will be slightly out of order, so it's always worth asking one of our bar volunteers if you can't find what you are looking for.

London Cask Beer Awards/Champion Beer of Britain (London and Southeast) - available from Thursday.

We are once again pleased to be hosting the London Cask Beer Awards (formally Champion Beer of London) competition, where beers from London that are shortlisted for the Champion Beer of Britain competition will compete by style for the title of overall winner of the London Cask Beer Awards. The judging takes place on Thursday morning and the winners will be announced mid-afternoon.

We are also hosting one round of the Champion Beer of Britain (London and South East) - for Red Ales, Old Ales, Brown Ales and Strong Milds. These beers will not be available until the Thursday session. However other than these, we do not hold any other beers back at the festival, beers are served as soon as they are ready (note: some beers may take a few more hours than others to settle and condition).

Allergens / Gluten Free

Information in the programme may have been updated since it was published, please speak to any of our Bar Managers with any questions. We have several beers brewed to a gluten free recipe on offer this year. These are shown in this list below, but you can also filter them using the online beer list at ebf.camra.org.uk/realale.

I would like to thank all the volunteers involved from ordering the beer, to serving it to you on the bar - without which this festival could not happen. I hope you enjoy this year's festival and the beers on offer, please do let us know by completing a survey form either online, or paper forms are available at the products stand.

Jon Hart - Wet Stock Controller

KEY

- Bitter
- Pale, Blond and Golden Ale
- British and New World IPAs
- Speciality - differently produced
- Brown, Red and Black Ales, Old Ale and Strong Mild
- Mild
- Porter and Stout
- Barley Wine and Strong Ale
- Speciality - flavoured (fruit/spices)

Unfined (hazy) Vegan

Brewed to a gluten free recipe (not certified gluten free, unless specified in tasting notes)

Beers entered for Champion Beer of Britain (London & South East)

Beers entered for the London Cask Beer Awards Beer entered for both

BAR A - Sponsored by JJ Moons, Ruislip

3 Brewers - Hatfield, Hertfordshire

Classic English Ale - 4.0%

Deep amber colour, a light hoppy aroma and a rich and rounded malty taste balanced by subtle hoppiness to give a supremely clean, smooth and refreshing ale. A modern classic.

Golden English Ale - 3.8%

Brewed using sought after Herefordshire Cascade hops to give a subtle citrus flavour, coupled with Cara malt to give a light golden colour and a hint of sweetness. Golden English Ale is an exceptionally refreshing beer.

Special English Ale - 4.8%

A robust and full bodied Premium Ale made with chocolate malt to give it a deep copper colour and the finest English hops give the ale a hint of berries. It's a well balanced, smooth and moreish ale.

Abbeyle - Sheffield, South Yorkshire

Absolution - 5.3%

A fruity pale ale, deceptively drinkable for its strength. Sweetish but not cloying.

Coconut Macaroon Stout - 5.4%

Abbeyle's Coconut Macaroon Stout is a dessert-in-a-glass: rich, coconut-forward and velvety, with enough roast to prevent it from being cloying. Sabro hops provide a refreshing twist. Perfect if you love sweet stouts (think Bounty/Mars bar profile), but don't want anything too boozy--sit back, sip slowly, and enjoy.

Deception - 4.1%

Deception is a refreshing, hop-forward session pale that spotlights the distinctive Nelson Sauvin hop profile. Think grapefruit, gooseberry, elderflower, and white grape--rooted in crisp bitterness with a clean, herbaceous finish. Ideal for a chilled pint on a sunny day.

Voyager - 5.6%

A bold, hop-forward IPA with vibrant aromas of citrus and tropical fruits. Juicy flavours of mango,

passionfruit, and lime dominate the palate, balanced by a clean, crisp bitterness. Light berry hints from Mosaic hops add depth, while the finish is dry and refreshing. Smooth yet punchy, it delivers a well-rounded and modern take on a classic West Coast-style IPA.

Acorn - Wombwell, South Yorkshire

2 Little Ducks - 3.4%

2 Little Ducks is a charmingly light, well-hopped golden ale with a bright floral-citrus aroma, zesty bitterness, and a clean, dry finish. Its easy-going profile and session strength make it a superb celebration beer--bright, crisp, and memorable.

Barnsley Bitter - 3.8%

Acorn Barnsley Bitter delivers a rich, comforting malt backbone with chocolate-caramel and nutty character, softened by fruity notes, and grounded by a firm but clean bitter finish. It's a quintessential Yorkshire bitter-traditional, satisfying, and characterful.

Barnsley Gold - 4.3%

Barnsley Gold is a vibrant session golden ale that's brightly hopped and citrus-driven, with a clean, dry finish that's hop-forward and refreshing. It's light-bodied, easy to drink, and carries just enough bitterness to feel crisp and satisfying.

CF272 IPA - 5.0%

CF-272 IPA delivers a springy, fruit-forward experience--ripe tropical and citrus aromas glide over a soft, slightly lush palate. It strikes a pleasant balance between juiciness and mild bitterness, with a clean, drinkable finish. A great gateway into New-England styles from a Yorkshire brewery.

Sun Storm - 4.4%

Sun Storm is a vibrant and refreshing golden ale that brings together citrus-hoppy brightness and a lean, clean finish. Its clarity and carbonation give it a bright, summery feel--an approachable yet flavourful brew that showcases Acorn's back-catalogue in the Reboot Series.

Alfred's - Winchester, Hampshire

Dom Boc - 4.2% **V**

A smooth and sessionable amber ale with flavours of dried fruit, raisin and toasted caramel.

Fyrd - 4.6%

A smooth and moreish beer, pouring very dark amber with an off-white foam. Flavours of dark chocolate and toffee with a long, refreshingly dry finish.

Anarchy - Newcastle upon Tyne, Tyne and Wear

Boot Boys - 5.0%

Enjoy a kick in the taste buds from this classic northern brown ale. Laced up with rich caramel malt flavours and a nutty finish.

Cheat Code - 5.2% **V**

A showcase of the versatile Simcoe hops. Cheat Code is a tropical, peachy modern IPA.

Animal (XT) - Long Crendon, Buckinghamshire

Capybara - 4.6%

Hazy appearance and juicy flavours make it a refreshing choice for ale enthusiasts seeking a flavourful and easy-drinking beer - and in theme with this years Ealing Beer Festival logo!

Guinea Fowl - 4.6%

Golden coloured American IPA style with a well balanced fruity flavour.

Hare - 4.6%

A full bodied, aromatic Red Rye ale brewed with malted barley, and the addition of 20% Rye to the recipe, gives some dryness and spice, and only lightly hopped to allow the malts to shine through.

Anspach & Hobday - Beddington, Greater London

The Hop Pickers Pale - 4.2% **V**

A light, fresh, Bavarian inspired wheat beer hopped with Mandarina Bavaria and Amarillo. All the classic characteristics of a German style wheat beer, but at a lower ABV. Aromas of banana, clove spice and citrus peel are paired with a smooth and rounded body, balanced by just enough hop bitterness to keep the beer fresh. A light yet full flavoured wheat beer, perfect for drinking in the sun.

The IPA - 6.0% **V**

A dry bitter, beautiful and citrusy. Lots of American hops but an English heart. Brewed with Summit, Ekuantot and Enigma. **Reigning Champion Beer of London.**

The Ordinary Bitter - 3.4% **V**

A modern interpretation of a classic Ordinary bitter, more colour but the same lightness in body and immeasurable drink-ability.

The Porter - 6.7% **V**

A blend of highly kilned and roasted malts suited perfectly with London water, producing balanced flavours of rich coffee and dark chocolate.

Arbor - Bristol

Mosaic - 4.0% **V** **G**

Gluten Free pale ale with bold floral and tropical fruit flavours and aromas.

Pocket Rocket - 3.4% **V**

Full flavoured session pale ale, brewed with Simcoe, Citra and Mosaic hops.

Rocketman - 6.0% **V**

Full flavoured and seriously drinkable American India Pale Ale brewed with Mosaic and Citra hops.

Big Trip - Manchester, Greater Manchester

Fakey Cake Make - 4.6%

Dark stout with flavours of dark chocolate and orange, described as a "deconstructed Jaffa Cake".

Just Act Normal - 4.2% **V**

Pale and hazy session bringing all the southern hemisphere flavours from the hefty DDH of New Zealand's best Galaxy & Motueka hops.

Questionable Mullet - 3.7% **V**

Vibrant haze pours with aromas of orchard fruit, crushed apples and candied orange peel with a hint of pine. On the palate, expect layers of juicy peach, fresh-cut apple, and tropical citrus zest, balanced by soft malt sweetness.

ZAP! - 3.4% **V**

A refreshing and clean taste with hints of citrus and tropical fruit, balanced by a subtle bitterness and a light body.

Billericay - Billericay, Essex

Blonde - 4.0%

A refreshingly light golden ale, with a hoppiness that balances flavour and texture to create the perfect, cold beer for a Summer's day.

Dickie - 4.2%

A balanced amber ale with a darker yet hoppy flavour reminiscent of old English bitters, and a slight, sweet maltiness to finish it with.

Bond Brews - Wokingham, Berkshire

Best of British - 4.0%

Tawny-coloured session bitter, predominantly malty, hops and fruit aroma. Dried fruit, earthy caramel flavours lead to a sweet nutty aftertaste.

Kaptain Chaos - 4.4%

Kaptain Chaos is an American Style Pale Ale. Brewed using a fistful of hops including Ekuabot, Azacca, Summit, Chinook & Cascade with a complex aroma of Grapefruit, Tangerine & Lime.

Brass Castle - Malton, North Yorkshire

Bad Kitty - 5.5% **V** **G**

A chewy chocolate-vanilla dream of a porter. Decadent and moreish.

Best - 3.9% **V** **G**

A copper-hued real Yorkshire Bitter that declares tradition and quality with every mouthful, supplying a harmonious blend of rich malt warmth, dried fruit aroma and balanced hop bitterness.

Bright - 4.3% **V** **G**

A complex and satisfying modern pale ale. Citra and Chinook hops pack juicy tropical fruit flavours onto a fulsome malt base. Crisp and delicious.

Morph - 5.0% **V** **G**

Zesty. Stone-fruit. Fulsome.

Brentwood - Brentwood, Essex

Braveheart - 5.0% **G**

A classic extra strong bitter.

Brentwood Porter - 4.8% **G**

Robust English porter with notes of coffee and chocolate.

Chockwork Orange - 6.5% **G**

A deep chocolate, malty beer brewed with oranges to give it a background citrus bitterness and matured to create a classic 'old ale' style.

Galaxy - 4.4% **V** **G**

Single hopped with Galaxy from Australia.

Here Comes the Sun - 3.8% **G**

Refreshing Pale Ale. Hints Of Ripe Passionfruit & Orange Peel.

Marvelous Maple Mild - 3.7% **G**

This delicate dark brown mild has just a hint of maple syrup coming through in the finish.

Spring Forward - 4.0% **G**

New world style bitter.

Zeus Juice - 4.8% **G**

Crisp, malt-balanced American pale ale, with soft fruity hop notes and a dry, medium-bodied mouthfeel.

Brew York - York, North Yorkshire

Duality - Citra & Strata - 4.6% **V**

Citra and Strata hops combine to deliver a vibrant blend of citrus zest, ripe passionfruit, and dank strawberry notes, underpinned by a subtle herbal complexity.

Ekuantot Be Serious - 4.9% **V**

Packed with bold Ekuantot hops, serving up vibrant notes of lime zest, papaya, and a touch of peppery bitterness that's sure to get your taste buds arguing in the best way possible.

Midgard Mist - 6.8% **V**

In collaboration with Thornbridge Brewery, this bold West Coast IPA bursts with classic character, delivering crisp, clean, bitterness alongside vibrant notes of grapefruit and pine.

Bristol Beer Factory - Bristol

Launch Approval - 4.2% **G**

Launch Approval brings two of the best in the hop game together: the US with Loral and Germany's Mandarina Bavaria. Loral with the 'noble' peppery spice and classic American citrus alongside the distinct orangeness of Mandarina.

Loop - 4.0% **6**

Sabro hops bring their iconic signature tangerine and coconut energy. Balancing the citrus New Zealand adds hop depth; Moutere amplifies the grapefruit citrus and new wave Superdelic™ adds the finishing red fruit, peach curve.

Peak Valley - 5.0% **6**

Expect a buttery biscuit base with 95% Maris Otter malt setting the standard. British hops Fuggles, East Kent Goldings and Target add a subtle floral, sage and citrus zing.

Broadtown - Broad Town, Wiltshire

Dan the Arches - 5.5% **V** **6**

A lovely, fruity IPA packed full of grapefruit, stone fruit and citrus flavours and aromas.

Fettlers Finest - 4.7% **V** **6**

A bold, aromatic and beautifully hoppy English style Pale Ale that packs a flavourful punch and is thirst-quenching and delicious in equal measure.

Brockley - Brockley, Greater London

Breakspear's Blonde - 4.3% **U**

Peach, apricot jam, grapefruit & orange marmalade flavours and a long bittersweet aftertaste.

Chameleon Pale - 4.1% **U**

Sessionable pale ale.

Garage Porter - 4.4% **V**

Coffee and sweet chocolate with hints of blackcurrant becoming hoppier and bitter late in the taste and fairly dry finish.

Harcourt Red - 4.8% **V**

Malty aroma, roast barley bitterness balanced by notes of red berries, marmalade, blackcurrants. Dry, roasty long aftertaste, which remains fruity.

Brunswick - Derby, Derbyshire

Rocket - 4.7%

A 'New World' IPA, the use of US and Pacific hops imparts citrus, apricot and mango flavours. Also available bottle conditioned.

White Feather - 3.6%

Very pale yet full-bodied session beer, easy drinking with a citrus twist.

Burton Bridge - Burton upon Trent, Staffordshire

5 O'Clock Somewhere - 5.0%

American-style red ale, packed with Chinook, Citra, and Simcoe hops.

Berry Pale - 4.1%

Raspberry Pale is a light, refreshing brew with a burst of tart berry sweetness and a crisp, zesty finish.

Bridge Bitter - 4.2%

A classic Burton style bitter with a distinctive Burton flavour. Hops used are Challenger, Target and Northdown with Styrian added at the end of the boil.

Gingers Nap - 4.1%

A zingy ginger pale.

Mumford Mild - 4.2%

Dark mild brewed with UK grown hops.

Stairway to Superdelic - 5.0%

Fruity and tropical notes, with a smooth malt backbone.

Burton Bridge (Heritage) x Sunken Knave - Burton upon Trent, Staffordshire

1950s Burton Ruby Mild - 4.3%

Hints of caramel and nuts seep in to create a well balanced ale.

Buxton - Buxton, Derbyshire

Cream of the Crop - 3.4% **U**

This hazy oat shake pale zaps you with citrus, berry, melon and pear flavours, and leaves a creamy mouthfeel that's truly out of this world.

Deepdale - 4.0% **V** **6**

A hoppy session IPA bulging with US super-hops Citra, Amarillo, Columbus & Ahtanum.

Highlander - 10.5%

A bold, Scotch barrel-aged imperial stout—perfect for fans of peaty whiskies.

Nuts & Crosses - 4.5%

A full-bodied milk stout with sinfully rich peanut butter decadence to create a true adventurous palate pleaser.

Right to Roam - 4.2% **V**

A highly sessionable bitter brewed using English grown hops.

Castle Rock x Arbor - Nottingham, Nottinghamshire

Trifecta - 4.8%

Session IPA brewed in collaboration with Arbor. Featuring hops from 3 different continents: Harlequin (UK), Mosaic (US), Nectaron (NZ). Highly drinkable, smooth, soft, juicy, hazy IPA with a restrained bitterness.

Caveman (Leatherbritches) - Smisby, Derbyshire

Cavedweller - 5.8%

Rich porter, chocolate and coffee notes come through in the malt while there's some dark berry flavours from the hops.

Neanderthal - 4.4%

An ale full of roast and caramel malt flavours and traditional Kent hops.

Palaeolithic - 3.8%

An easy drinking American Pale Ale, bright with a malty backbone and hoppy notes of pine and citrus.

Colchester - Wakes Colne, Essex

Freak Show - 3.8%

This pale copper ale is flavoured with English hops Goldings, Epic and First Gold. The first beer brewed in our Freak Show range.

Jack Spitty - 4.0%

Full of hop flavour with delicate bitterness and light aroma.

Sweeney Todd - 4.2%

A full flavoured best bitter with a deep red hue. Roasted malt flavours and a subtle dry spiciness provided by crystal rye.

Crouch Vale - South Woodham Ferrers, Essex

Amarillo - 5.0%

A superb premium golden ale with wonderful aromas of Amarillo hops and a lasting spicy and orangey flavour. Cara malt provides a little burnished colour, but the light body belies its strength.

Dark Star (Fuller's) - Chiswick, Greater London

Hophead - 3.4%

Very hoppy aroma with a sweet malt flavour overlaying the hops and citrus fruit.

Deya - Cheltenham, Gloucestershire

Feedback Inbound - 4.0% **V**

Classic DEYA cask formula using a new hop variety called Möst.

Disruption is Brewing - Camberley, Surrey

Chaos More Chaos - 5.0%

Exotic tropical fruit bowl with hints of Mango & Blueberry. Super smooth and delicious.

Kathy from Timekeeping - 4.7%

Red Berry & Citrus tropical fruit background flavour.

Melody in Motion - 4.0%

Crafted with Azzaca, Galaxy, and Citra hops, this beer dances on the palate with vibrant tropical fruit and citrus notes.

Shadow of the Void - 8.6%

A bold, complex Imperial Stout with deep roasted malt flavours, dark chocolate, and coffee notes, delivering a rich, smooth finish.

Dorking - Capel, Surrey

Dark Mild - 3.4%

Malt-forward flavour profile with notes of caramel, toffee, chocolate and coffee.

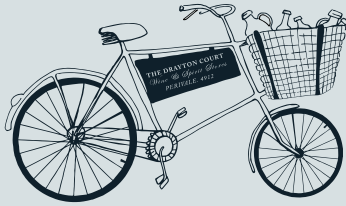
Red India - 5.0%

Perle and Centennial hops create a smooth but punchy bitterness that leaves you wanting more.

Downlands - Small Dole, West Sussex

Best - 4.1% **V**

A caramel and toffee nose into a rich, fruity, russet brown. Best bitter typical of the style.



THE DRAYTON COURT



RELAX. DINE. STAY.
draytoncourtlondon.co.uk

2 The Avenue, Ealing, London, W13 8PH
draytoncourtlondon.co.uk

/TheDraytonCourt @DraytonCourt

BAR B – Sponsored by The Five Points Brewery

Downlands – Small Dole, West Sussex

Revival – 4.8%

A well-balanced, mildly hoppy yet refreshing American pale ale—easy to drink, floral forward with gently sweet and grassy notes, finishing crisp and dry. A solid “retro” offering that’s perfect for a session or easy summertime pint.

Drop Project – Mitcham, Greater London

Choppy – 4.8%

A beautifully session-able Dry Irish Stout with zero adjuncts. Expect a full roasty malt bill dripping in black coffee, dark chocolate, and background hints of mixed berry fruitiness.

Toasty – 4.3%

Seductively sweet & complex flavours of caramel cinder & toffee, entwined with a touch of light spice from a grist full of Rye, Cara Red, Munich and Wheat malts.

Duration – West Acre, Norfolk

Sun Down – 4.5%

A Session IPA sunkissed with Galaxy, El Dorado and Mosaic hops giving tropical mango and juicy nectarine notes with a vibrant finish of zesty lime.

East London – Leyton, Greater London

Cowcatcher American Pale Ale – 4.8%

A generously hopped American Pale Ale with Amarillo, Chinook, Simcoe and Citra. Refreshing and a great summer beer.

Foundation Best Bitter – 4.2%

An amber best bitter, with a good balance of maltiness and a refreshingly crisp bitter finish. Flavoured with a blend of English and New Zealand hops.

Jamboree Golden Ale – 4.8%

An all-English golden ale, hopped with Bramling Cross to impart berry notes and lovingly made with a blend of lager, pale and wheat malt for a smooth, refreshing mouthfeel.

Lido Pale Ale – 4.0%

A light and fruity summer pale. An initial taste of lemon biscuit makes way for a hit of grapefruit, slowly fading into a gentle herbal finish reminiscent of sage.

Quadrant Oatmeal Stout – 5.5%

A multi-award winner, this is an elegantly dark, chocolately oatmeal stout. Rich and smooth, with a bitter-coffee finish and creamy mouthfeel.

Elephant School (Brentwood) – Brentwood, Essex

Blood & Honey – 4.5%

Refreshing wheat ale that blends the tartness of blood orange & the sweetness of honey.

Bumbleduck – 4.8%

Robust porter with hints of coffee, chocolate, and honey. The rich roasted malt profile is complemented by sweet honey notes.

Hopper Strange Thing – 4.5%

A blend of five hops creates unique aromas of berries, lychee, and pine. Fruity sweetness balances with a crisp, dry finish.

Mango Unchained – 7.2%

Brought back for the first time in 5 years by popular request. Double IPA brewed with fresh luscious mango.

Peasant's Revolt – 4.6%

Red ale with new world hops.

Porter in a Storm – 4.9%

A rich porter which showers your tastebuds with waves of chocolate, fruity and bitter with successive sips.

Wanna Coffee – 4.5%

Rich chocolate and bold coffee dominate this smooth, complex milk stout. The sweetness and bitterness create a balanced, indulgent experience.

Elgood's - Wisbech, Cambridgeshire

■ Blueberry Porter - 4.5%

A rich malt base with flavours of dark chocolate and coffee, complemented by the sweet and tangy notes of blueberries.

■ Cambridge Bitter - 3.8%

Malty and fruity aroma with a satisfying flavour and bitter finish.

□ Route 66 A.P.A - 4.4%

Pale APA brewed with solely US hops Chinook, Amarillo and Comet for a hoppy aroma.

Elusive - Finchampstead, Berkshire

□ Baked - 4.0%

This Pale Ale was brewed with surplus bread from the SHARE charity.

■ Dystopia Black IPA - 5.2%

This reimagining of Elusive classic, Shadow of the Beast, leans hard on Citra and Mosaic which interplay wonderfully with the gentle roast of the malts in this textbook BIPA.

■ Oregon Trail - 5.8%

CAMRA Champion IPA of Britain 2025! A classically-styled West Coast IPA. Simcoe, Chinook and Columbus hops combine to deliver a resinous profile with a citrus undertone.

□ Orié - 4.3%

A cask-only pale ale single hopped with Simcoe for notes of pine and stone fruits.

Firebird - Rudgwick, West Sussex

□ Paleface - 5.2%

A full hoppy aroma, balanced with a slightly sweet but strong mouth feel.

Five Points - Hackney, Greater London

■ Best - 4.1%

A single-hopped Best Bitter, brewed with Fuggle from the award-winning Hukins Hops. Refreshing and smooth, Best has notes of caramel & biscuit, and a lovely grassy, herbal freshness that makes you want to reach for another one. A modern take on a classic style.

□ Citrus Pale - 4.2%

A thirst-quenching citrus Pale Ale brewed with lemon and grapefruit zest.

□ Gold - 3.4%

Expect bright and fruity berry esters alongside flavours of biscuit, orange, peach and honey.

□ Pale - 4.4%

A fresh, zesty, aromatic pale ale brewed with malted barley, a little wheat, and Amarillo & Citra hops from the West Coast of the USA. It's our flagship beer, and its balanced citrus & resinous notes make it a versatile beer that anyone can enjoy, at any time, in any place.

■ Railway Porter - 4.8%

Smooth and full-bodied, Railway Porter delivers a simple one-two-punch of sweet chocolate and bitter coffee thanks to a combination of seven different malts. East Kent Goldings add a touch of honey

□ XPA - 4.0%

A light and tropical extra pale ale with assertive hop bitterness and aromas of mango and passionfruit.

Five Points x Turning Point - Hackney, Greater London

■ 1995 - 3.3%

This Mild is inspired by recipes written in 1995. With aromas of brown sugar, dried fruit and coffee, it's a delicious blend of sweet and bitter.

Fixed Wheel - Blackheath, West Midlands

■ Blackheath Stout - 5.0%

A full-bodied fruity stout brewed with New Zealand and English hops to give an Oaky bitterness and dark fruits finish.

□ Century Gold - 4.8%

A bright golden ale brewed with Maris Otter, lager malt and wheat, a balanced body with a slight sweetness is then blasted with Magnum, Centennial and Citra hops, giving layers of citrus and lemon.

■ No Brakes IPA - 5.9%

Inspired by the fixed wheel couriers of the west coast, this American inspired IPA has no brakes and is packed full of classic American hops delivering upfront fruity citrus flavours, English malts add some balance to the hops with a touch of sweetness.

□ Wheelie Pale - 4.1%

Easy drinking house pale, sweet malts with hints of citrus and melon from a combination of Citra, Blanc, Magnum & Cardinal hops.

Fownd - Kidderminster, Worcestershire

■ Iron Tusk - 3.6%

Iron Tusk has complex malt profile and subtle hints of hedgerow fruits imparted from UK hops from the Charles Faram Development Program.

□ Mermaids Tale - 4.8%

A mix of bittering hops with cascade and comet. Notes of grapefruit, mango, pine, orange and peach.

□ Seven Crowns - 4.5%

Cascade, Comet and Amarillo hops provide a citrus and berries flavour and aroma.

Fuller's - Chiswick, Greater London

■ ESB - 5.5%

Rich mahogany in colour, ESB tempts with aromas of orange marmalade, balanced by soft malt toffee. The hops impart grassy, peppery notes alongside hints of citrus fruit - while the Pale Ale and Crystal malts bring distinctive biscuity flavours. A smooth, delicate bitterness lingers on the palate to give a supreme finish.

■ HSB - 4.8%

A strong English bitter, HSB has a russet colour and the rich, soft-fruit flavours of traditional Dundee cake. It is noted for its nutty sweetness and smooth finish.

■ London Pride - 4.1%

Unmistakably London's beer, with its well-rounded flavour and rich history.

Fyne - Cairndow, Argyll and The Isles

■ Highlander - 4.8%

A nutty, caramel-malt body with sweet red fruit notes and a gently bitter finish.

□ Hurricane Jack - 4.4%

A well-balanced blonde ale showcasing fruity Cascade and Amarillo hops on top of a pale malt base.

Gipsy Hill - West Norwood, Greater London

■ Southpaw - 4.2%

A hop-forward beer, with enough dark, roasty flavour

to not overwhelm the piney, grapefruit of this Simcoe and Cascade charged amber.

Green Duck - Stourbridge, West Midlands

■ Murder She Oat - 5.2%

Oats, oats & more oats! A soft, smooth and luscious mouthfeel with notes of rich chocolate and roast.

□ One Great Thing - 4.8%

An extra pale malt base, intense resinous pine, gorgeous passion fruit and a clean bitterness.

□ Zodiac - 4.2%

A vibrant pale bursting with tropical fruit and citrus from Azacca hops balanced by dank, resinous notes from Columbus.

Gun - Heathfield, East Sussex

□ Trombo - 5.0%

Trombo is a hop bomb. A delicious Double Dry Hopped India Pale Ale with flavours of citrus, peach, grapefruit and pine, layered onto a soft, light malt base, finishing with a balanced bitterness.

■ Zamzama - 6.5%

A rounded malt body meets an avalanche of hops. Mango, lychee and grapefruit are the flavours here, all balanced by an assertive bitterness.

Hammerton - Barnsbury, Greater London

■ Bitter - 4.0%

Brewed with the English hops Challenger, Northdown and East Kent Goldings. The result is a refreshing, smooth and sessionable Ale.

■ Crunch - Peanut Butter Stout - 5.5%

A perfect ratio of Peanut Butter, Lactose, and Biscuit. A massive hit of roasted peanuts and biscuit on the nose, followed by a silky-smooth mouthfeel, and a sweet CRUNCH as it goes down.

□ N1 - 4.1%

A session pale ale with a variety of fruity and aromatic hops from around the globe. The malt and hop combination creates an interesting flavourful thirst-quenching beer.

□ N7 - 5.2%

Refreshing pale ale brewed with six different hops from the US and New Zealand giving a complex citrus aroma. The subtle sweet malt flavour balances the fresh bitterness.

Harvey's - Lewes, East Sussex

Old Ale - 4.3%

Soft and full-bodied, with hints of dried fruits and dates. Rich, dark and warming.

Sussex Best - 4.0%

A superbly balanced bitter with prominent hop character. Using a blend of four local hops, water filtered through the Sussex Downs over 30 years, and Harvey's unique 60 year old yeast strain.

Hewitt's (Brentwood) - Brentwood, Essex

Red Menis - 3.8%

A refreshing session ale red/ruby in colour ale not too bitter (around 30 IBU) but very heavily hopped for a strong spicy grassy aroma and perhaps a hint of blackcurrant.

Un Hung Hero - 5.0%

Citrus notes, particularly bitter orange, and perhaps a hint of grapefruit.

Urbane Gorilla - 4.3%

A dark brown beer with a balance of hop and malt bitterness with a sweet edge. Spicy with hints of vanilla liquorice.

Hop Back - Downton, Wiltshire

Summer Lightning - 5.0%

An extremely pleasant bitter, straw coloured beer with a terrific fresh, hoppy aroma.

Hop Kettle - Cricklade/Swindon, Wiltshire

Element - 4.2%

Triple hopped session pale. Late and dry hop additions of Mandarina Bavaria, Mosaic and Cascade hop varieties bring fresh, bright orange citrus and soft fruit flavours, with a smooth and clean bitterness in the finish.

Neonate - 4.5%

Brewed with the same malt and hops - a combination of Citra, Chinook and Centennial.

Howling Hops - Hackney Wick, Greater London

Dark Mild - 4.6%

Traditional style with a light fruit cake aroma and a warming, roasted coffee and dried fruit flavour.

Life Coach London Stout - 4.4%

With a rich, roasted malt aroma, dark chocolate bitterness, this one ticks all the boxes!

Party Wave - 4.5%

A clean, bright and delicate modern West Coast Pale Ale with all of the character and none of the gluten. Time to iron your dancing cagoule and join the party wave.

The Upper Crust - 5.0%

Strawberry on the nose, raisin on the palette and a malted caramel finish - top draw!

Indie Rabble - Windsor, Berkshire

An Actual Orange - 3.4%

An Actual Orange is a single hop session pale ale with the Tango hop added both at boil and in whirlpool for an intense citrus zip atop classic, bold bitterness.

Iron Pier - Gravesend, Kent

Bitter - 4.8%

Honey and Toffee malt flavours are complimented by spicy hops and smooth bitter finish.

Harlequin Pale - 3.9%

Big on flavour and aroma, expect bold peach, pineapple and passionfruit notes with a complex bitterness

Killick's Mill - 5.3%

Hazy IPA with soft mouthfeel, fruity hop character with a hint of pine, and a balanced bitterness. Hopped with Citra and Idaho 7.

Rosherville Red - 4.8%

Hoppy red rye ale, brewed with US hops to give a fruity character which contrasts nicely with the rich and spicy rye malts.

Kent - Birling, Kent

California Leaning - 5.0%

A full-on, hoppy IPA with grapefruit and other citrus fruit flavours topped off with characteristic bitterness, pine and resin.

Superdelic - 4.5%

A New Zealand hop with the taste of red fruit, candy and tropical fruits.

Langham - Lodsworth, West Sussex

Continental Pale Ale - 5.5%

A balanced and refreshing beer with a smooth texture, light citrus, herbal, and floral notes.

Hip Hop - 4.0%

Loaded with floral hop aroma, clean & crisp with a pleasing dry, bitter finish, Hop content Cascade & Amarillo.

NZ Hopped EPA - 4.3%

A sweet malt base, balanced by the punchy hop aroma and flavour of New Zealand hops.

South Downs Best - 4.5%

A classic dry Bitter with balanced malt flavours. It delivers with robust bite, a hint of blackcurrant and bitterness with oomph!

XXX - 4.4%

A dark, chocolate malty, but light mild ale with smooth hopping, for a slightly sweeter taste.

Leatherbritches - Smisby, Derbyshire

A Kind of Magic - 4.0%

Citrusy pale with a dry bitter finish.

Citra Pale - 4.2%

A refreshing tropical session pale bursting with flavour.

Left Handed Giant - Bristol

1880 Export Pale - 5.5%

Easy drinking, hop-forward, with layers of orange peel and juicy grapefruit, smooth bitterness, and notes of pine, apricot, and passion fruit.

Leigh on Sea - Leigh on Sea, Essex

From the Depths - 6.8%

A seriously strong stout, featuring deep, boozy notes of coffee and chocolate, derived from the dark roasted malts used in the brewing process.

Kursaal Gold - 3.9%

An English style golden ale with a decent dash of Cascade hops for a lovely citrus finish.

Mayflower - 4.0%

A deep mahogany colour with a ruby hue and smooth, malty flavour profile.

McFadden - 3.8%

Traditional & refreshing dark mild ale, subtly malted and lightly hopped.

Liquid Light - Nottingham, Nottinghamshire

Sugar for my Pill - 4.9%

Mountain IPA.





THE ROSE AND CROWN



WARM WELCOME. GREAT PUB GARDEN.
EXTENSIVE BEER SELECTION.

roseandcrownaleing.co.uk

Church Place, St. Mary's Road, Ealing, London, W5 4HN | [f/RoseAndCrownW5](https://www.facebook.com/RoseAndCrownW5) @roseandcrownaleing

LAGER Can
Litter Action Group for Ealing Residents



Supporting CAMRA by keeping
Ealing Beer Festival tidy

Please help by putting rubbish in the provided bins



VISIT OUR TAPROOM

CAMRA members get 10% off

Unit 3, Cromwell Industrial Estate,
Staffa Rd, Leyton, London E10 7QZ

7 mins walk from Lea Bridge Rd Station
what three words: ///sober.likes.dragon

BAR C – Sponsored by Teddington Beer Festival

Liquid Light – Nottingham, Nottinghamshire

Hole in my shoe – 5.1%

This decadent Black Forest Gateau Stout marries the rich, fudgy flavours of chocolate with the tart sweetness of cherries, creating a sensational experience for the palate.

Now & Then – 4.5% **V**

A super juicy, sweet and tangy sour with a fruity blend of strawberry, blackcurrant and lemon with a creamy cheesecake finish.

Only Tomorrow – 4.2% **V** **G**

This beer delivers an explosion of citrus, tropical, stone fruit and berry notes, creating a refreshing and invigorating taste profile that is sure to delight the palate.

Wizard of Finance – 4.2% **V**

A beautiful blend of bready biscuity honey notes from the malt, a slight fruity ester from the yeast and subtle bitter finish to keep it refreshing.

London Brewing – North Finchley, Greater London

100 Oysters Stout – 4.6%

Brewed with delicious Irish Oysters. Winner Gold Stout SE Regional CAMRA 2016, Silver National Winter Ales Festival 2017.

Beer Street – 4.0%

Named after Hogarth's famous print, this is a traditional English bitter; well-balanced bitterness, brewed with Goldings and Fuggles hops, with hints of toffee, dried fruits, dark chocolate and a nutty rye finish.

Flying the Mags – 3.8%

Easy-drinking mild with a medium sweet finish and notes of biscuit and tobacco. Dark brown in appearance, fruity yet nutty on the nose with a gentle background hop bitterness.

Upright – 4.0%

This new session ale has all of the hop flavour and aroma with less alcohol so you can keep 'upright'

even after a few. Grapefruit and barley sweetness hide its refreshing bitterness.

Long Man – Litlington, East Sussex

Long Blonde – 3.8%

Lemon, fruity, and refreshing flavours.

Old Man – 4.3%

This original dark beer has soft malt notes of coffee and chocolate that combine with a pleasant light hoppiness to create a rich, full tasting Old Ale of times gone by.

Lost Pier – Hove, East Sussex

Mount Kill-A-Man-Poirot – 4.4% **V**

A Mountain Pale with all the haze of a NEIPA and the crisp bitterness of a Westie.

Nonchalant Shark XPA – 3.4%

This beer delivers a smooth, tropical flavour profile, making it an enjoyable choice for those seeking a laid-back drinking experience, it offers a light and refreshing taste.

Mad Squirrel – Potten End, Hertfordshire

Hulk – 5.0% **V**

Bursting with tropical fruit aromas—think passionfruit, peach, and citrus—this cask ale delivers a smooth, full-bodied mouthfeel and a punchy hop finish.

Mallinsons – Huddersfield, West Yorkshire

BSA Dirty Electro – 5.5% **V**

This West Coast IPA delivers a huge juicy blast of aroma from all American hops. There's a massive hop mouth feel with layers of flavour, building into a wall of hops!

Nectarone – 4.1% **V**

A single hopped ale using hops from New Zealand. A rich golden ale with aromas of citrus fruits, with strong elements of nectarine and hints of mango. A lovely tart bitterness and short sharp zesty finish. This lives up to it's name. Gorgeous!

Marble – Salford, Greater Manchester

Dive Bomb – 5.0% **V**

Crafted with Crystal malts, Mosaic, and Centennial hops, it's a flavour journey that hits all the right notes.

Early Grey IPA – 6.8% **V**

A citrusy India Pale Ale, which is fermented with timed additions of Earl Grey tea.

Mild – 4.1% **V**

Eight different malts were used to create this balance Mild. Hints of caramel and chocolate are layered in the modern interpretation of a classic British style. A rich dark colour with a dry finish.

Norm – 4.5% **V**

This hazy pale has a soft malt base with fruity, berry and citrus notes.

Stratagem – 4.2% **V**

Bold and beautifully balanced Stratagem is a hop lover's dream. Juicy hits of grapefruit, mango, and ripe berries burst from the glass, thanks to the dynamic trio of Citra, Mosaic, and Strata hops.

Marko Paulo – Northfields, Greater London

Haze Pale – 4.0%

Modern quenching pale ale with Citra and Mosaic hops.

Mild Ale – 3.4%

Dark, malty with hints of caramel.

Milestone – Newark, Nottinghamshire

Black Pearl Stout – 4.3%

A full bodied black, authentic stout. Made with American Nugget & Gallena Hops

Cromwell Best – 4.4%

Well Rounded Class English Bitter. Made with Challenger, Progress & Goldings Hops

Loxley Gold – 4.2%

A deep golden, crisp & refreshing ale. Made with Challenger & Progress Hops

Pacific Islander – 5.0% **V**

Hazy, Tropical and Fruity IPA.

Moor – Bristol

Bitter – 3.4% **V U**

Amber, with deep malty flavours that belies its

strength. Nutty elements on the nose and palate.

Dark Mild – 4.0% **V U**

Lots of dark roast aromas and flavour, hedgerow fruit and hints of caramel on the tongue balance the gentle bitterness.

Resonance – 4.1% **V U**

Vibrant Citra hops compliment British malts to perfect effect.

Stout – 5.0% **V U**

Richly decadent roasted malt with a lusciously elegant body. as smooth as silk every time and living proof that simply using the four essential beer ingredients forms the perfect stout.

MootBrew – Rochester, Kent

Olicana – 4.0%

Olicana single hop pale.

Pilgrim – 3.8%

Kentish Bitter. Malty, copper bitter with aromas of biscuit, caramel and pears. Dry hopped with Kentish Bullion for subtle blackcurrant notes.

Neckstamper – Wandsworth, Greater London

Best Bitter – 4.5% **V**

Chestnut colour, caramel aroma and a nutty malt. Notes of orange and stone fruit with moreish bitter finish.

Moon Curser 5.2% **V**

Extra pale colour, hop forward American Pale Ale with juicy American hops.

Neepsend – Sheffield, South Yorkshire

Blonde – 4.0%

Mellow and easy drinking with a dry finish. Hopped with Brewers Gold, Chinook and Cascade.

Kipa – 5.2%

Strong pale ale with a smooth and full malt base. Singled hopped with Willamette for aromas of blackcurrant and blackberry with subtle floral, spicy and earthy notes.

Kluddle – 5.2%

Rich, malty and aromatic Belgian Brown Ale. Fermented with an authentic yeast strain for flavours of sweet fig, dates and caramelised sugar.

Kutenai – 3.8%

Session pale ale, with blended US Calypso, Mosaic and Idaho 7 hops for plenty of tropical fruit notes with a clean, dry bitter finish.

Neptune – Liverpool, Merseyside

Cask Club Strata – 4.4% **V**

Juicy passion fruit & ripe berry aromas lead the way in this vibrant single-hop pale ale.

Hornby Gold – 3.7% **V**

This English Golden Ale brings citrus notes combined with berry fruits leading on to a grassy and woody finish.

Ventura – 5.0% **V**

Bright vibrant flavours of peach and tropical fruits with strawberry leading to a citrus finish.

New Bristol – Bristol, Gloucestershire and Bristol

My Nelson Romance – 4.5% **V**

Nelson hop-centric brew detonates on the palate with a brilliant array of tropical fruits, peach, apricot and lemon.

North Riding – Snainton, North Yorkshire

Maple & Walnut Stout – 5.5%

Rich, robust Stout made with six different malts and hopped with English Bramling. Maple syrup is added late boil, then natural walnut flavouring is added post fermentation.

Northdown – Margate, Kent

Bitter Seas – 4.2% **V**

A moreish Best Bitter with a modern twist. Local Kent hops form the earthy, herbal base then dry-hopped with an aromatic dose of NZ hops.

Buck – 4.8% **V**

This foggy yellow American wheat IPA is dry hopped with Huell Melon known for its distinctively fruity aromas of melon, wild strawberry & peach. Citra & Galaxy ramp up the tropical pungent party.

Dune Buggy – 3.8% **V**

Brewed light and bright but flavour packed with zippy sherbert complexity & oats to layer up the body. Cashmere & Mosaic hops bringing a tropical fruity goodness to the party.

Squidly Diddy – 5.8% **V**

A heady hop hit of Galaxy and Citra bringing the

super-surge of tropical fruit flavours backed up with a pithy zest backbone.

Sweet Mild of Mine – 3.4%

This is a dark mild with lots of dark crystal malt but a simple flavour.

Tidal Moon – 5.8% **V**

An indulgent stout infused with port and oak, brimming with dark chocolate, boozy cherry and a hint of vanilla tannins.

Northern Monk – Leeds, West Yorkshire

Fresh From Motueka – 3.8%

Motueka single hop small batch brew from the Old Flax Store.

Oakham – Peterborough, Cambridgeshire

Dragon – 5.0%

A golden Cask Aged IPA bursting with tropical fruit, grapefruit, lemon, lime, apple and rose characters set off with hints of woody resin.

Krush – 4.4%

Big, bold, fruit forward flavours with stone fruits, citrus orange, tropical fruits (think guava in particular) and berries to the fore.

Skyline – 5.0%

The towering spicy citrus characteristics of Cascade are skilfully enhanced by the tropical pineapple, passion fruit and peach characters plus herbal hints of Nectarone and lifted further by the aromatic grape and gooseberry notes of Nelson Sauvin.

Olde England Ales (Potbelly) – Kettering,

Northamptonshire

King of East Anglia (Raedwald's Gold) – 3.9%

Rich honey, sweetish aroma, dry bitter flavour with notes of dried vine fruit.

Otherworld – Dalkeith, Midlothian

Firebird – 4.2%

A juicy hazy pale ale showcasing Enigma hops from Australia. Bursting with orange and passionfruit with hints of vanilla, gooseberry and pineapple, and a slightly honey sweet finish.

Pennine – Bedale, North Yorkshire

Heartland – 3.9%

Dark copper coloured ale with a toffee, malted caramel smell and a rich smooth moreish flavour.

Pacific - 4.1%

A light refreshing pale ale brewed using the finest New Zealand hops having the characteristics of tropical fruits and a mild citrus palate

Pennine IPA - 4.4%

A crisp golden IPA brewed with a perfect balance of zesty fruits, mild liquorice and black pepper undertones.

Scapegoat - 4.2%

A delicate simple and refreshing beer that is hopped using one hop that provides a slightly citrus aroma, but gives a lovely creaminess mouthfeel

Schwartz Clipper - 4.4%

Dark twist on their regular IPA, the same balance of zesty fruits, mild liquorice and black pepper but delivered in a deceptive black beer, with a final citrus burst.

Pentrich - Pentrich, Derbyshire

Little Fury - 4.2% 

A naturally hazy session pale, heavily hopped with Citra. This beer is full of bold citrus & stone fruit flavours from the hops, complimented with punchy tropical notes from the yeast.

Soma - 4.2%

A highly sessionable bright and hoppy pale ale, golden in colour with soft citrus and stone fruit flavours coming from a light Mosaic dry hop.

Perivale - Ealing, Greater London

Beaver Bitter - 3.4%

Bitter with willow bark.

Choco Milk Stout - 4.0%

Chocolate milk stout. Smooth and creamy chocolate flavour profile, balanced with roasted malt notes and a subtle sweetness.

Knot Welcome - 4.0%

Light, refreshing Japanese Knotweed infused sour beer. With subtle tannic apple notes, it's perfect for supping in the sun!

VeriDodo Deux - 4.5%

A juicy NEPA loaded with El Dorado & Mosaic hops. Brewed with The Dodo Micropub, West Middlesex CAMRA's branch Pub of the Year!

VeriZesty Elderflower - 4.0%

Elderflower sour, not too sour with some sweetness.

Perivale x Ealing Beer Festival - Ealing, Greater London

TBC - SPECIAL - 4.5%

Watermelon wheat beer! Prepared with 10 fresh juicy watermelons in the brew. Brewing as we went to print, expect a refreshing and fruity beer, perfect for a sunny day. Ealing Beer Festival's second collaboration brew with Perivale Brewery.

Portobello - North Kensington, Greater London

Market Porter - 4.6%

A contemporary take on a classic London beer style, with an incredible mix of 8 different malts representing the diversity that has characterised the Portobello Road for almost 100 years. Expect coffee and chocolate notes with a roasted caramel nose and a beguiling depth of flavour.

Polari - 4.2%

Stonewall Housing was founded in 1983. They provide supported accommodation, housing advice, mental health advocacy and domestic abuse support to the LGBTQI+ homeless community. Polari is a collaborative pale ale brewed to raise money to support their amazing work, with 10p from every pint sold going direct to the charity.

Star - 5.1%

A smooth, balanced bitter. Brewed with traditional English hop and malt varieties, Star is our take on the classic British bitter, with a modern approach to brewing technique & ingredient sourcing. Aromas of nuts and winter berries combine with biscuit, caramel malt notes for an ale with herbal freshness & pleasing bitter finish.

Stiff Lip - 5.0%

A West Coast style IPA brewed with five different American and new-world hop varieties for a multisensory hop experience. Late dry hopping with Simcoe & US Cascade brings a wave of delicious tropical fruit flavours which crash onto the palette with a pleasingly bitter finish that has been known to stiffen the lip - pucker up!

Summer Blonde - 4.2%

Light drinking amber, fruity bitter with a biscuity malty flavour, that is also present on the nose. Lingering, dry bitter finish.

Tropical Crush - 4.4%

A stiff, well-hopped IPA using aromatic new-world hops and augment it with two additions of fruit. The result is juicy and aromatic with a bitter hop backbone keeping everything in check. When the temperature goes up Tropical Crush is dangerously crushable.

Rebellion - Marlow Bottom, Buckinghamshire

Defender - 4.0%

Golden ale that's single hopped with Callista, which adds distinct fruity and red berry character. Well balanced and refreshing.

Smuggler - 4.2%

Amber coloured, special bitter with a distinctive fruity hop character, and lasting bittersweet finish.

Redemption - Tottenham, Greater London

Big Chief - 5.5%

Big hoppy IPA style beer, packed full of Kiwi hops with hints of honey and nectar and plenty of tropical citrus and floral notes.

Hopspur - 4.6%

Caramel, toffee, honey & hazelnut combined with a malty backbone make this an incredibly well balanced amber ale.

Kazbek - 4.0%

A Blonde Ale with a Czech twist. The use of Kazbek hops gives this modern blonde ale a lemon sherbet character but the extra pale malt base doesn't take away from the flavour profile and allows the hops to shine.

Trinity - 3.0%

West Coast hops dominate the flavour profile but are balanced out by a simple malt base and a satisfying bitterness.

Salopian - Hadnall, Shropshire

1000 Yard Stare - 5.2%

Wave upon wave of bright vivid hops encircle the palate with gooseberry and herb aromas cascading over a brisk zesty summit.

Dark Shadow - 4.4%

Deep, dark and richly black, a powerhouse of a stout, with concentrated flavours of coffee and molasses, infused with clean fruity hops and balanced by a deep bitterness.

Sambrook's - Wandsworth, Greater London

Block Party - 5.0%

A perfect crossover IPA, this beer has the intense, juicy tropical aromas from a modern New England style IPA, coupled with the drinkability and balanced bitterness of the old-school West Coast IPAs that changed the craft beer world. It uses all US hops and has a bright golden colour.



EPPING ONGAR RAILWAY

REAL ALE & CIDER FESTIVAL



80
Real Ales*

25
Ciders*

25-27 JULY 2025

*while stocks last.

Beer Cider Good Cheer Music Trains

Bar open from 1200 each day, closing late Fri & Sat

Inclusive Heritage Buses from Epping and Shenfield



eorailway.co.uk

01277 365200



BAR D

Sambrook's - Wandsworth, Greater London

John Hatch Valour IPA - 5.4%

Tasting notes not available at time of printing.

Junction - 4.5%

A rich strong malt character from the crystal malts and roasted barley with a spicy, blackcurrant and fruity aroma from the blend of English hops.

Lavender Hill - 4.5%

Utilising a brand new experimental hop variety when first brewed, this summery pale bitter is infused with a generous honey hit for a sweet, lightly hopped and refreshing taste of summer.

Phoenix Pale Ale - 4.3%

A microbrew from John Hatch Head Brewer at Sambrook's. A quintessentially English Pale Ale.

Pomelo - 4.3%

Pomelo is made with zest and juice of the fruit itself, and the natural grapefruit flavours bring out the best of the hops and vice versa to produce a vivid, bursting hit of summertime.

Powerhouse Porter - 4.9%

A combination of brown, chocolate, crystal and pale malts and hop with a blend of English hops. Powerhouse Porter has a rich, dark chocolate flavour and an aroma of toasted malt and winter fruits.

Silent - Buxton, Derbyshire

Arguing With Thermometers - 4.2%

Juicy and hoppy cask hazy pale with Citra, El Dorado, and Sabro. Summery, fruity goodness.

Siren - Finchampstead, Berkshire

Suspended in Luminosa - 3.4%

Peach-mango lemonade, candied orange peel, boysenberry, papaya and guava can all be found.

Southwark - Bermondsey, Greater London

Bankside Blonde - 3.8%

Bankside Blonde is traditionally brewed with English Pale Ale Malt giving a light gold appearance.

100% Mosaic hops gives floral, tropical, and fruity tones that create a most refreshing, easy drinking summer ale.

Bermondsey Best - 4.4%

Traditional English Best Bitter with the finest English Ingredients, Maris Otter Malt and East Kent Goldings, produce a superbly balanced chestnut beer, with hints of caramel shortbread flavour and wonderful lavender, spice and honey hoppiness.

Harvard - 5.5%

A highly-hopped American Pale Ale brewed with English Malt giving a golden colour. Four American hops are added at various stages of the brew to produce an intense hoppiness balanced with a fresh bitter aftertaste and citrus and floral overtones.

Kviek - 3.8%

A traditional Scandinavian Yeast which gives subtle citrus flavours, Pilsner and Chit Malt give a clean flavour and a wonderful Lemon Zestiness from the Lemon Drop hops and added Lemon Zest. Very refreshing.

Mayflower Session IPA - 4.2%

Lightly coloured easy drinking pale ale with a hit of hops - all the hoppiness without the alcohol, a true session ale. Brewed to commemorate the voyage of the Mayflower with the Pilgrim Fathers to America in 1620, a journey that started in Rotherhithe, not Plymouth!

Routemaster Red - 4.2%

Routemaster Red is a modern style Red Ale. Pale, Bestmalz Red X[®] Malts give a subtle red hue with a hoppy flavour of peach and passionfruit.

Lemon Drop - Single hop - 5.0%

The name truly says it all. Lemon Drop offers a unique lemon-citrus character with a pleasant aroma. The bright citrus and subtle herbaceous notes are perfect for sessionable beers, ales tend to bring out her sweeter side.

Lórien - Single hop - 5.0% 

Lórien® has tangy fresh fruit and mixed citrus notes of fresh melon, wild flowers & cinnamon spice.

Thames Pirate IPA - 5.0% 

Thames Pirate IPA has an intense tropical fruit flavoured IPA, bringing hints of mango, grapefruit, and passionfruit. Fermentation with a blend of yeasts enhances the tropical profile which, combined with a balanced bitterness, gives it a powerful mouthfeel.

St Peter's - St. Peter South Elmham, Suffolk

 **Cherry Porter - 4.5%**

Tasting notes not available at time of printing.

Citra - 4.7%

Tasting notes not available at time of printing.

 **Organic Best Bitter - 4.1%**

A very dry and bitter beer with a growing astringency. Pale brown in colour, it has a gentle hop aroma which makes the definitive bitterness surprising.

Stardust - White Waltham, Berkshire

Easy Pale Citra - 3.8%

Fancy an easy going pale ale? That's exactly what this subtle blend of American hops is all about. The late Citra hop addition adds a fresh, fruity aroma.

Optic - 4.2%

An aromatic, hoppy pale ale with notes of tropical fruit. With aroma from Citra and Mosaic hops, this easy drinking beer is packed with flavour.

 **Roses - 4.2%**

This sessionable red ale has everything you need: a full body, a wide range of dark malts flavours, and a clean finish.

 **Silk - 5.8%**

This rich and creamy milk stout combines notes of roasted coffee and dark chocolate created from the complex malt backbone. Velvety mouthfeel formed by a touch of lactose, makes it a smooth and moreish beer.

Train of Gold - 4.4%

A bright, golden beer. Dry-hopped with UK Cascade and El Dorado to bring pleasant notes of tropical fruits and orange, supported by a light resinous backbone and a moreish bitterness.

Swannay - Orkney, Northern Isles

Voar - 3.5%

A light yet punchy Citra pale ale.

Tap East - Stratford, Greater London

 **Built Different Brown - 4.3%** 

An amazingly malty, chocolate-y, caramel-y brown ale.

 **East End Mild - 3.5%** 

A hard to find treasure nowadays, the East End Mild is low in ABV but high in flavour. It is rich in a chocolatey malt flavour with a touch of dried fruitiness at the end.

Over My Dead Body - 5.0% 

Pale Ale made with Idaho 7 hops.

Sublime - 4.3% 

Peach and grapefruit hoppy aroma. Sweet fruit is balanced by a dry bitter, hoppy character that continues into the finish.

Tartarus - Leeds, West Yorkshire

Abaset - 4.6%

Double dry hopped with Citra, Nectaron & Eclipse to give aromas of stone fruits & pine notes. Expect intense flavours of pineapple, peach & passionfruit with a zesty citrus finish.

 **Enfield - 4.0%**

Session stout flavoured to replicate a chocolate brownie. Boiled for 3 hours to create a thick & luscious chocolate stout base recipe. Additional chocolate essence added to develop the flavour.

 **Tanuki - 5.5%**

DDH pale hopped with Comet, Eclipse & Topaz.

Tempest - Tweedbank, Scottish Borders

Long White Cloud - 5.2%

Carrying all the freshness of a kiwi sauvignon blanc, this is a beer you will keep coming back to.

Pale Armadillo - 3.8%

Refreshing hoppy ale, golden yellow and high on citrus notes throughout, with a bit of underlying sweetness in the taste.

Thornbridge - Bakewell, Derbyshire

AM:PM - 4.5% 

Bags of tropical fruit aromas, pineapple, tangerine, guava and passion fruit are balanced with a chewy, honeyed malt character.

California Sun - 4.5%

An easy drinking IPA. Classic hop flavours of pine, resin and citrus fruit dominate over chewy malt with a tantalisingly bitter and dry finish.

 **Hazy Jaipur - 5.9%** 

DDH Jaipur uses the same recipe but is double dry hopped creating an even punchier tropical fruit character.

 **Pink Grapefruit Jaipur - 5.9%**

Celebrating 20 years of Jaipur. Pink Grapefruit Jaipur is a vibrant twist on the classic Jaipur IPA. Infused with pink grapefruit, enhancing its natural citrus profile. Expect bold notes of grapefruit, lemon, and tropical fruits, complemented by a smooth bitterness. The addition of pink grapefruit amplifies the beer's zesty character, making it a refreshing choice for hop enthusiasts.

 **Strong Dark Mild Union - 5.5%**

A rich, dark ale with roasted malt flavours, hints of chocolate and caramel, and a smooth, warming finish. It's a bold yet balanced beer, perfect for those who enjoy a classic British mild with depth and character. Brewed on the Union brewkit.

Three Acre - Uckfield, East Sussex

 **Southern Bitter - 3.8%**

Thick, rich, earthy and malty, Southern Bitter is brewed with first-rate English grains and hops. A taste of the Sussex countryside.

 **Sussex Mild - 3.3%**

A classic session ale, this Mild is inspired by Sussex's brewing heritage. Nutty and earthy flavours from premium barley malts, complimented by subtle notes of hedgerow berries from a lineup of all English hops.

Three Legs - Bexhill, East Sussex

10 Years Of Pale No.3 Simcoe and Citra - 3.7%

To celebrate 10 years of brewing Pale No.3, Three Legs have brewed a series of birthday brews with the

same simple malt base with Cascade and Columbus and a rotating mix of dry hops on the hot side

Hop Plug - Vic Secret - 4.2%

Direct to cask hopped pale ale with liquid spectrum Vic Secret added to each and every cask. Heaps of pine, hedgerow and resin with sweet citrus, lime and pineapple.

 **This Is A West Coast IPA - 5.5%**

A mix of UK Bullion and Columbus on the hot side and US El Dorado and Strata on the cold side bring lingering orange zest bitterness with ramped up tropical aromas.

Tindall - Norwich, East Anglia

 **Caramel Stout - 4.5%**

This stout is not overpowering with roasted malts and coffee flavours, it is rich and full bodied but the sweetness of the caramel leaves you wanting more.

Galaxy Dream - 4.0%

An award winning super pale ale dry hopped with Mosaic. Packed full of fruity, citrus aroma complementing the subtle sweetness of the malt.

Tiny Rebel - Newport, Gwent

Cosmic Pale Peach - 4.0%

A breezy, fruity session ale that offers a bright, peach-led twist on Tiny Rebel's classic Cosmic Pale. Light, uplifting, and perfect for a sunny cask pint

Great Scott - 3.4%

This super session IPA might not be packing '1.21 gigawatts!' but it sure is full of flavour.

Mixtape - 4.6%

Soft, hazy pale ale with ripe peach and citrus on the nose. Smooth tropical flavour with a gentle bitterness and clean, silky finish. Easy-drinking and refreshingly balanced.

Oats Assassin - 4.5% 

Balanced hop bitterness with juicy, fruity character, backed by oats for texture.

 **Summer Jam - 4.3%**

Burnt Pineapple IPA - Peach and Mango work together to give you a drink that'll keep the good vibes going.

Titsey - Tatsfield, Surrey

California Spring - 4.3%

Session IPA with tropical fruit flavours.

Torrside - New Mills, Derbyshire

Fire Damage - 5.0% **V**

A smooth, rich yet easy drinking smoked stout.

Hannabi - 5.0% **V**

Super hazy DDH pale bursting with juicy goodness from Citra and Strata.

Late to the Party - 5.5% **V** **G**

Hopped thoroughly with Cascade, backed up with a bit of Southern Cross & Motueka, it's a deep dark beer with enough roast to balance all the floral notes.

Oldschool - 3.4% **V**

A traditional, historically inspired brown ale, brewed with a significant amount of brown malt giving it a rich and distinctive character.

Too Many Devils - 7.4%

Proper west coast IPA i.e. clear, bitter and full of resinous fruity hops.

Twickenham, Greater London

Grandstand - 3.8%

Easy drinking session bitter with sweet malty palate overlaid with orange and apricot. Building spicy hoppy bitterness with caramel notes..

Honey Dark - 4.8%

Creamy dark beer. Honeyed caramel and malty nose, which are also in the flavour, with hops and bitter roast notes.

London Porter - 5.3%

Creamy roasty malty porter with stone fruit and chocolate and a hint of coffee. A roast, malty, fruity, bitter finish.

Orange Zeus - 4.8%

Tangerine golden ale with grapefruit and lemon citrus flavour balanced by a malty backbone that runs through to the finish.

Twisted Oak - Bristol, Somerset

Creation - 4.2% **V**

Creation is a pale and hoppy beer, brimming with five of the finest American hops - Chinook, Amarillo, Cascade, Mosaic and Simcoe.

Junction Lock - 4.2% **V**

A gorgeous, session IPA brewed using Chinook, Cascade and Cluster. Always popular!

Unbarred - Brighton, East Sussex

Joosy - 5.1%

Hazy pale ale that leads with intense notes of citrus fruits, sweet tangerine, grapefruit & stone fruits. Featuring Simcoe & Amarillo hops, coupled them with a considerable amount of oats in the malt bill & fermented with Unbarred's house yeast strain to create a full, smooth bodied & crushable pale.

Verdant - Falmouth, Cornwall

Miniature Cymbals - 3.4%

Here we have a super sessionable low strength straw coloured cask pale ale loaded up with some classic 'C' hops and lashings of Simcoe.

Played Like A Piano - 5.0%

A Pale Ale that is clean and crisp with a balanced bitterness, expect a bright aroma of Citrus and Pine with a taste of grapefruit, orange zest and resinous Pine, maybe a little funk in there too!

Weekend project - Lower Peover, Cheshire

Afternoon In Chico - 5.2%

Channeling those classic roots with vibrant citrus & pine notes from Citra, Simcoe, Centennial & Cascade. Crisp & refreshingly bitter.

Al Fresco - 3.4%

Single hop Citra table beer, hazy, dank & juicy, with a bitter bite - a true expression of an iconic US hop

Wharf - Colchester, Essex

Scruffy Mild - 3.9%

Pours deepest brown with tan foam. Aroma: mildly roasty, chocolate & nutty hints, dark berries. Taste: light sweet & light to moderate bitter. Light body, lightly dry on the palate.

Wild Boar - 5.0%

An amber-coloured beer with a hoppy aroma.

Wimbledon - Wimbledon, Greater London

Keller Helles Cask Conditioned Lager - 4.8%

The crisp palate of this unfiltered Helles style lager is overlaid with a blend of classic and contemporary hop varieties giving hints of melon and stone fruits on the aroma and a clean zesty bite on the palate.

Olivers Elixir - 5.0%

A smooth blend of SW19 blonde ale & XXXK, 2019 vintage.

Quartermaine IPA - 5.8%

Fruity, spicy, floral hop aromas lead to a full, rich, almost light fruit cake middle palate, ending with a clean dry bitter finish.

SW19 Blonde - 4.0%

Brewed with English, Australian and New Zealand hops for an all-round summer experience. The perfect summer beer, light straw in colour, subtle citrus notes, hints of malt and a satisfying crisp finish.

XXXK Vintage Ale Armagnac - 10.5%

2023 XXXK Vintage Ale, barrel-aged in Armagnac casks. Aroma of spice, Seville orange, taste of marmalade and fruitcake with a dry, bittersweet finish.

Wiper and True - Bristol

Long Shadows - 4.2% **V** **U**

A good pint of Best has a balance of sweet malt and tangy hops, making you crave another. Long Shadows is considered one of those great Bests.

Windsor & Eton - Windsor, Berkshire

Firefly - 4.0%

A refreshing seriously blonde, seriously hoppy beer using the lightest of malts and the fruitiest of hops. Citrus, melon & papaya jump from the glass, followed by a light bread & biscuit palate on first taste.

Specifically Pacific - 4.6%

New Zealand IPA, hoppy with some peachy flavours.

XT - Long Crendon, Buckinghamshire

Dead Brewery's Society - Dutton's XB - 4.4%

Amber coloured, smooth and balanced with long lasting bitterness. Brewed in association with the Dead Brewers Society. Duttons (Blackburn) XB Pale Ale brewed by XT, last brewed in 1967.

Hopkitty - 3.9%

Bursting with intense tropical and citrus flavours with toasted malt sweetness.

Squid Ink - 5.5%

A bold beast of a beer with its blend of Columbus, Summit, Galaxy and Chinook hops and a tsunami of nine malts.

XT4 - 3.8%

An amber beer with a special Belgian malt and a fruity mix of American and European hops.



LOW ALCOHOL

Perhaps you are the designated driver, or would like to take a break between your alcoholic drinks at the festival. We have the following range of low alcohol beers available from the Keg and International Beer Bar, in addition to soft drinks.

KEY

- Pale/IPA
- Speciality - Differently Produced
- K Keg
- KK KeyKeg
- V Vegan

WORLD BEER BAR

Athletic - Milford, Connecticut, USA.

Run Wild IPA - 0.4% - 350ml Can

Brewed with a blend of five Northwest hops, it has an approachable bitterness to balance the specialty malt body.

Mikkeller - Copenhagen, Denmark

Drink in the Sun - 0.3% - 330ml Can (V)

American wheat beer. Golden yellow with fruity hoppy notes.

KEG BAR

BRULO - Lochristi, Belgium

7 Hop 7 Grain DDH IPA - 0.5%

Smooth mouthfeel with an assertive bitterness, double dry hopped with lush tropical fruit notes.

Lust for Life DDH IPA - 0.5%

Double dry hopped with Citra, Simcoe, Mosaic.

Packed with a ripe, juicy character of mango, peach and pine.

*These beers may be rotated and not be available at the same time.



THE DUKE
OF KENT



RELAX. DINE. DRINK.

dukeofkent.co.uk

Scotch Common, Ealing, London, W13 8DL | dukeofkent.co.uk | [f](#) [@dukeofkentw13](#)

EALING BEER FESTIVAL SPONSORSHIP

A fantastic opportunity to promote your business to a wide audience of over 10,000 attendees over the four day festival. Advertise here next year!

Contact: sales@ebf.camra.org.uk

Enjoying a beer in the sun?

Why not try enjoying a beer in the sun while playing bowls!?

Springfield is a local bowls club that welcomes new members

We have a cheap bar with Rebellion beers on tap

Come along on a Wednesday evening with a pair of flat-soled shoes and we can show you how to play

We also have snooker, pool, darts, and host regular music nights

www.springfieldactonbowlsclub.co.uk

25-27 Western Gardens, Ealing, London W5 3RS

KEG BAR

We are very excited to bring back the hugely popular Keg bar with a great selection of fun and varied beers, from pales, sours, stouts and pilsner including some from our amazing local breweries. What makes the Keg bar unique in its offerings is the beers will be moderately carbonated and served chilled between 5-8°C in our usual measures. These beers will be served in both keg and KeyKeg (beer is dispensed using air pressure, which doesn't meet the beer inside the KeyKeg). We hope you enjoy the great choices we have selected for you and we look forward to seeing you at the bar!

Kelly Mukhida

Keg Bar Manager

KEY

☐ Lager/Pilsner ☐ Pale/Golden ■ Black IPA ☐ Sour ■ Stout/Mild

■ Fruit ☐ Speciality - Differently Produced ☐ Low Alcohol

Ⓚ Keg ⓀⓀ KeyKeg Ⓥ Vegan

Ⓜ Brewed to a gluten free recipe (not certified gluten free, unless specified in tasting notes)

Anspach & Hobday - Beddington, Greater London

☐ Ansbacher Lager - 5.0% Ⓚ Ⓜ

A modern take on a world classic, Ansbacher Lager is a Premium Lager Beer, brewed in London. The beer is a bright, brilliant gold in colour, and is clean, crisp and refreshing. A delicate aroma of traditional and contemporary hops is paired with a subtly sweet malt base, leading to a snappy, bitter finish.

■ Pineapple Gose - 4.2% ⓀⓀ

Brewed in collaboration with Maldon® Salt, The Pineapple Gose delivers aromas of freshly sliced, fleshy pineapple, not only by the addition of pineapple juice, but also by the use of intensely fruity Bru-1 hop. A delicate acidity keeps the beer bright and fresh, while a pinch of Maldon®'s unique Sea Salt Flakes on the finish enhances the sweetness, adding balance and drinkability. A tropical reimagining of a historic German style.

Black Iris - Nottingham, East Midlands

■ Matrimony - 4.8% ⓀⓀ

This beer takes all the classic bitterness, citrus and pine character of a West Coast IPA but softness it with the addition of dark malt extract.

Brentwood - Brentwood, Essex

■ Falcon Punch - 5.1% ⓀⓀ Ⓜ

IPA with fruity hoppy punch, low in bitterness and very refreshing. Gluten Free. Gold winner of the European beer challenge.

BRULO - Lochristi, Belgium

☐ 7 Hop 7 Grain DDH IPA - 0.5% Ⓚ Ⓥ

Smooth mouthfeel with an assertive bitterness, double dry hopped with lush tropical fruit notes.

☐ Lust for Life DDH IPA - 0.5% Ⓚ Ⓥ

Double dry hopped with Citra, Simcoe, Mosaic. Packed with a ripe, juicy character of mango, peach and pine.

*These beers may be rotated and not be available at the same time.

Hammerton - Barnsbury, Greater London

☐ Cactus Juice - 4.4% Ⓚ

A sour conditioned on fresh Cactus Fruit or Prickly pear, as it is more commonly known, along with Papaya with a hint of Maldon sea salt to accentuate the natural sourness and fruitiness. This tropical bonanza is refreshingly bright and zingy, the perfect thirst quencher.

■ Dia Los Muertos - 5.0% Ⓚ

A Mexican hot chocolate stout with aromas of chocolate, caramel and vanilla, balanced by a light roasted character from the dark malts, and spice and heat from brewing with Ancho Grande chillies.

London Brewing - North Finchley, Greater London

■ Beano - 6.0% ⓀⓀ Ⓥ

West Coast IPA in collaboration with Mikkeller Brewpub London. Dry hopped with Simcoe, Columbus, Chinook & Cascade.

Neckstamper - Leyton, Greater London

■ Bluffer - 5.0% ⓀⓀ Ⓥ Ⓜ

Old slang for an inn-keeper, 'Bluffer' is a welcoming, refreshing beer combining Citra and Krush hops.

■ Elbow Crooker - 4.0% ⓀⓀ Ⓥ

Crush cravings with this easy-drinking, super-smooth IPA.

Northern Monk - Leeds, West Yorkshire

☐ Ice Cream Van Classics - Fruit Tower - 5.0% Ⓚ

A full stack of orange, pineapple, raspberry, lime and blackcurrant. Made to be sipped in the sun.

Northern Monk x Donzoko - Leeds, West Yorkshire

■ Double Northern - 7.0% Ⓚ

Double Northern is a modern take on a classic beer that was prevalent at the time Northern Soul was dominating dancefloors across the North of England. The base combines historic Chevallier malt with Maris Otter, while Brewers Invert Sugar No.1 boosts ABV and fermentability whilst honouring traditional brewing methods. English hop varieties First Gold, East Kent Goldings and Bramling Cross deliver marmalade, earthy spice, and winter berry flavours with a bold bitterness.

Perivale - Ealing, Greater London

☐ VeryCrisp - 5.0% ⓀⓀ

Refreshing Nettle Pils.

☐ VeriZesty Elderflower - 4.0% ⓀⓀ

Elderflower sour, not too sour with some sweetness.

Rebellion - Marlow Bottom, Berkshire

■ Hazy Pale - 4.3% Ⓚ Ⓥ

A fruity and refreshing hop-forward hazy pale, golden in colour with a soft, opaque haze and a fluffy white head. Tantalising aromas of mango, pineapple and coconut with flavours of tropical fruit and pine; all wrapped up with a smooth and balanced finish.

Sambrook's - Wandsworth, Greater London

■ Poncho - 4.1% Ⓚ

Pineapple Kölsch.

Tap East - Stratford, Greater London

■ Donkey Therapy - 4.0% ⓀⓀ Ⓥ

Session India Pale Ale (SIPA)

Thornbridge - Bakewell, Derbyshire

■ Pink Grapefruit Jaipur - 5.9% Ⓚ

Celebrating 20 years of Jaipur. Pink Grapefruit Jaipur is a vibrant twist on the classic Jaipur IPA. Infused with pink grapefruit, enhancing its natural citrus profile. Expect bold notes of grapefruit, lemon, and tropical fruits, complemented by a smooth bitterness. The addition of pink grapefruit amplifies the beer's zesty character, making it a refreshing choice for hop enthusiasts.

Vault City - Edinburgh, Edinburgh and The Lothians

☐ Blood Orange Radler - 3.4% Ⓚ Ⓥ

Stepping away from their usual sour style, Vault City's latest Radler turns up the dial on juicy sweetness with the bold, citrus-packed punch of blood orange.

☐ Neapolitan Single Scoop - 4.1% Ⓚ

Sweet strawberries, rich chocolate, and smooth vanilla combine into a single (but generous) scoop of soft ice cream for a vibrant, fruity flavour and a smooth, luscious mouthfeel.

Poire Belle Hélène, Série Tontap #4 - 5.0% ^K

Série Tontap #4 brings together the Edinburgh brewery and some of France's finest indie bars and bottle shops. Expect poached pears, smooth chocolate, creamy vanilla, and delicate flavours of roasted almonds—a combination inspired by a classic French treat.

Verdant - Falmouth, Cornwall

People, Money, Space, Time - 3.4% ^K

A soft and easy drinking pale ale that has oodles of Citra and Mosaic seeping from all directions. It drinks way above its meagre ABV and is crammed full of tropical indulgences and citric sharpness.

Wimbledon - Wimbledon, Greater London

XXXX Vintage Ale Armagnac - 10.5% ^{KK}

2023 XXXX Vintage Ale, barrel-aged in Armagnac casks. Aroma of spice, Seville orange, taste of marmalade and fruitcake with a dry, bittersweet finish.

Yonder - Radstock, Somerset

Coco Mango Loco - 5.5% ^{KK}

Bursting with the ripest, juiciest mango and smooth, sun-soaked coconut, this cosmic sour ale beams a bright, fruity tang straight to your taste buds. Tart, tropical, and just the right amount of crazy.

Mini Battenburg - 5.0% ^{KK}

Mini Battenburg: Marzipan and vanilla sponge cake pastry stout beer, meet cake. Cake, meet beer. You two have a lot in common, we are sure you'll get along swimmingly.

Watermelon Crush - 4.0% ^{KK}

Perfectly ripe and refreshingly sweet red watermelon juice, and a touch of raspberry has been infused in to this tart and immensely crushable summer sour.



**ALFRESCO DINING
& WEEKLY LIVE MUSIC**

Book your spot: ploughnorthfields.co.uk

297 Northfield Avenue, Ealing, London, W5 4XB
ploughnorthfields.co.uk

[f](#) [@](#)ploughinnealing

CIDER

If you like the taste of apples, you'll love REAL cider! It's made using 100% apple juice (or pears, if it's perry), and if other fruit is added, then it's natural, not from concentrate. Unfortunately, you won't find REAL cider in many pubs, so make the most of our festival to try some of the delicious ciders and perries on offer.

In response to customer demand, we have plenty of fruit ciders, and there should always be a good choice available. What better way of familiarising yourself with the wonderful world of real ciders and perries!

Welcome to the Cider Bar!

Susan Wachowski - Cider Bar Manager



An extensive list of ciders and perries on offer can be found here.

WALLED GARDEN SUMMER SEASON	2025 SEASON 22 ND JULY - 31 ST AUGUST BOSTON MANOR PARK	THE BIG BAD WOLF A Brand new Rock'n Roll Musical THURSDAY 28 TH AUGUST 2PM	THIS CHANGES EVERYTHING SUNDAY 17 TH AUGUST 7pm
A MIDSUMMER NIGHT'S DREAM 28 TH JULY - 8 TH AUGUST 7pm (3pm Sundays)	DR FREG AND THE FRUIT & VEG MYSTERIES MONDAY 11 TH AUGUST 4PM	ACT II SCRATCH NIGHT MONDAY 4 TH AUGUST 7pm	SINDHU VEE With Rinty Christie, Paul Tomlinson & Hosted by Stephen K. James THURSDAY 28 TH AUGUST 7:30PM
MAGIC OF THE MUSICALS TUESDAY 19 TH AUGUST 7pm	FROZEN LOVE A Buckingham Nicks Story WEDNESDAY 23 RD JULY 8:15PM	GRANDPA POSEIDON TUESDAY 22 ND JULY 3PM	BOSTON MANOR BEER FESTIVAL 30 TH AUGUST 12PM - 10PM 31 ST AUGUST 12PM - 5PM
THE IMPORTANCE OF BEING EARNEST 9 TH - 25 TH AUGUST 7pm (3pm Sundays & 25 TH)	BOSTON MANOR BEER FESTIVAL		

BOOK NOW [THEARTSCENTRE.LONDON](https://www.theartscentre.london) / BOX OFFICE: 0207 947 9263 / TICKETS FROM £5 - £22
THE WALLED GARDEN, BOSTON MANOR PARK, BOSTON MANOR ROAD, BOSTON MANOR, TW8 9JU

CIDER BAR CRAFT BEER LIVE MUSIC WINE & SPIRITS

13-16 NOV 2025



75 CASK ALES

FOR TIMES & TICKETS VISIT
[TEDDINGTONBEERFESTIVAL.CO.UK](https://www.teddingtonbeerfestival.co.uk)

LANDMARK FERRY RD
ARTS CENTRE TEDDINGTON
TW11 9NN

WORLD BEERS

The international beer bar will feature beers from Europe with a few from elsewhere. Beer styles will include lager, blond, wheat, dark, gueuze, fruit and low alcohol.

Please bring a pint cup to the bar as we need the extra space to pour the beer properly.

Adam Miller – Bar Manager

GERMAN LAGER AND PILSNER

Andechs Vollbier Hell – 4.8% - Classic Bavarian lager

Andechs Spezia Hell – 5.9%
Strong version of a Bavarian helles

Augustiner Edelstoff – 5.6%
Dortmunder strong export lager

Augustiner Hell – 5.2%
Crisp and fresh with notes of citrus and hops

Ayinger Jahrhundert Bier – 5.5%
Golden lightly malty beer

Berliner Pilsner – 5.0% - 500ml Cans
Clear golden Berlin Pilsner

GERMAN WHEAT BEERS

Schneider Helle Weisse – 4.9%
Hazy wheat beer with a hint of banana

CZECH LAGER (All 500ml cans)

Vinohradsky Vinohradská 11 – 4.5% - 500ml Can
Czech pale lager

BLOND (all 330ml unless otherwise stated)

De Halve Maan Brugse Zot (B) – 6.0%
Golden blond Belgian pale ale

Dupont Saison Dupont (B) – 6.5%
Golden blond, dry and refreshing

Garden Brewery Oseka Hazy IPA (CRO) – 6.2% - 440ml
Can New England IPA

Moersleutel Skateboard (NL) – 6.0% - 440ml Can
American IPA

WHEAT BEERS (all beers 330ml)

Blanche de Bruxelles (B) – 4.5%
Unfiltered wheat beer with coriander and orange peel

Flensburger Pilsner – 4.8% - 500ml Cans
Light citrus and hop flavour

Fruh Kolsch – 4.8% - Classic Cologne blond

Hacker Pschorr Kellerbier – 5.5%
Unfiltered earthy blond lager

Tegernsee Tegernsee Spezial – 5.6%
Straw gold with a long dry bitter finish

Tegernsee Tegernsee Pils – 4.8%
Smooth full bodied pilsner

Warsteiner Pilsner – 4.8% - 500ml Can
Easy drinking pilsner

Hacker Pschorr Hefe Weisse – 5.5%
Refreshing cloudy wheat beer

Vinohradsky Jantarová 13 – 4.9% - 500ml Cans
Czech amber lager

Orval (B) – 6.2% - Trappist slightly spiced pale ale

St Bernardus Extra 4 (B) – 4.8% - Refreshing blond

St Feuillien Saison (B) – 6.5%

Hazy amber Belgian saison

To Øl #DIPA (DK) – 8.7% - 440ml Can
Imperial New England IPA

To Øl Nebulous (Birrificio Italiano) (DK) – 5.3%
440ml Can - European pale lager

Hitachino Nest White Ale (JAP) – 5.5%
Crisp moderately malty sweetness

DARK BEERS

Ayinger Celebrator (D) – 6.7% - 330ml Can
Doppelbock malty sweet and bitter

Boon Duivelsbier Donker (B) – 8.0% - 330ml Can
Top fermented Belgian strong dark

Hofbrau Dunkel (D) – 5.5% - 500ml Can
Malty aroma and taste with a slightly fruity flavour

O'Hara Nitro Irish Stout (IRL) – 4.3% - 440ml Can
Pours black with a coffee malty taste

GEUZE (all bottles 375ml will be sour or sharp)

3 Fonteynen-Oude Geuze – 6.9% - Classic sour geuze

Tilquin – Gueuze A L'Ancienne – 7%
Blend of one, two and three-year-old lambic

Tilquin – Meerts Tilquin 2021/2022 L'Airelle Sauvage 5.8%
Lambic with lingon berries

Tilquin have produced a series of lambic sour beers using different wine grape varieties. Meerts (March beer) is a low strength lambic. The fruit has been fermented for four months in a blend of 1 year old meerts and a blend of two 2 year old lambics. Unfiltered, unpasteurized and refermented in bottle.

FRUIT

Boon Kriek (B) – 4.0% - 375ml Can
Cherry lambic moderately sweet and slightly tart

Chouffe Chouffe Cherry (B) – 8.0% - 330ml Can
Sweet and tart cherry beer

SPECIALITY (all 500ml)

Fruh Kolsch Natur Radler (D) – 2.2% - 500ml Cans
Refreshing blend of Kolsch and lemonade

Funky Fluid Buko Shake (POL) – 5.5% 500ml Cans
Passion fruit, mango, lime and coconut sour

LOW ALCOHOL

Athletic Brewing Co Run Wild IPA (USA) – 0.5%
355ml Cans - Session IPA

Schneider Weisse Aventinus Eisbock (D) – 12.0%
500ml Can - Complex wheat doppelbock

St Bernardus Abt 12 (B) – 10.0% - 330ml Can
Huge full bodied quadruple

Stone Brewing Xocoveza 2023 (USA) – 8.1% -355ml Can
American Imperial Stout

Tilquin – MeertsTilquin A La Roussanne 2021/2022 5.8%
Lambic with Roussanne grapes

Tilquin – MeertsTilquin A La Syrah 2021/2022 5.8%
Lambic with Syrah grapes

Tilquin – MeertsTilquin Au Pinot Noir 2021/2022 5.8%
Lambic with Pinot Noir grapes

Tilquin – MeertsTilquin Au Riesling 2021/2022 5.8%
Lambic with Riesling grapes

Mikkeller Ich Bin Raspberry (DK) – 3.7% - 330ml Can
Ruby red sweet and tart raspberry beer

Schlenkerla Rauchbier Marzen (D) – 5.1%
Highly smoked dark beer

Schneider Weisse Aventinus Eisbock (D) – 12.0%
Complex wheat doppelbock

Mikkeller Drink'in the Sun (DK) – 0.3% - 330ml Cans
Zesty and hoppy



THE FORESTER



WINES & MEADS

Welcome to the English Wine Bar. Yet again we try to bring you some exciting English wines from the midlands and the south of England. This year we have a good selection of meads for you to taste and enjoy. We have also a new English sparkling wine for you to try. We hope that you enjoy your time at the festival, so come and join us and have a great day.

Colin Hotham - Wine Bar Manager

KEY

White Red Rosé Sparkling Mead

Brightwell - Oxfordshire

Oxford Gold 2017 - Dry

A succulent wine made from Huxelrebe grape, full of hints of pineapple and melon.

Oxford Rosé - Dry

This rosé wine is produced from red grapes grown on the chalk and flint gravel soil of the Thames Valley. Vibrant raspberry colour and a gentle tannin strength add to this wine.

Pinot Noir - Dry

Rounded with subtle tannins, there are hints of spice in its long, dry finish on the palate.

Oxford Regatta - Dry

Dry medium bodied fruity red wine. Hints of cherry and damson fading to a smoky strawberry finish.

Denbies

Baccus 2022 - Dry White

Crowded with freshly cut grass and a hint of wildflowers, floral theme continues onto the palate and culminates with a delicate impression of white currents.

Pinot Gris - Dry

With a delicate hint of rose gold in the glass, Pinot Gris is only made in the best years. A hint of vanilla on the nose is succeeded by a palate of nectarines and almonds and culminate with a rich minerality finish.

Greenfields Sparkling

This elegant fizz is made from whole bunch hand-picked grapes. Greenfields spends a minimum of 3 years on the lees prior to disgorgement, it is a classic Champagne blend of Pinot Noir (56%), Chardonnay (32%), and Pinot Meunier (12%). On the palate there are hints of strawberries and cream with a layer of brioche.

Fitz Sparkling Pink Wine - Dry

Fitz pink, a vibrant, red berry flavour sparkling wine made from Chardonnay, Seyval Blanc Reichensteiner, Madeleine Angevine, Pinot Noir and Rondo grapes.

Lyme Bay - Devon

Chardonnay 2021 - Dry White

Light gold with a nose of creamy green and red apples, toast and stoned fruit with subtle oak tones, gives a rounded creamy lingering finish.

Baccus 2023 - Dry

A classic expression of bacchus with fresh notes of lychee & apple, and distinct English hedgerow character.



LIVE SPORT & THAI FOOD

foresterealing.co.uk

2 Leighton Road, Ealing, Middlesex, W13 9EP
foresterealing.co.uk

@theforester_W13

Shoreline 2022 - Dry

A fresh, complex, English dry white made from Reichensteiner, Baccus, Chardonnay, Seyval Blanc, Ortega, Pinot Noir, and Solaris Grapes.

FRUIT WINES

Elderberry Wine - Off Dry

An off dry red wine, rich in colour and full in flavour.

Cherry Wine - Dry

A perfectly delicious dessert wine, Luxurious wine offering a burst of black cherry and a hint of almond with a smooth finish.

Blackberry - Medium Dry

Lyme Bay Blackberry fruit wine is a medium wine, bursting with the tangy, full flavour and heady aroma of ripe hedgerow fruit.

Lyme Bay Meads

Traditional Mead - Sweet

A sweet, full-flavoured mead with rich, beep honey flavours and a moreish honeycomb finish.

West Country Mead - Medium Sweet

A Medium Sweet honey-based wine with a sweet spicy overtone. Lovely served at room temperature & with spicy food or strong cheeses.

Garden Mead - Medium Sweet

A medium sweet, light mead with lovely fresh mint overtones. A great accompaniment to any dessert and also stunning when served chilled over ice.

Black Cherry Mead - Sweet

A beautiful combination of sweet and tart flavours of honey and wild cherries.

Loxwood Meadworks

Festival - Off Dry

Flavours of honeyed citrus, vanilla and floral notes. It has a rich creamy body and fresh acidity.

Fruit Wine White - Off Dry

Gooseberry and Elderflower
An off-dry wine with the refreshing, aromatic zest of elderflower meeting the crisp flavour of gooseberry.

Elderberry - Off Dry

An off dry red, rich in colour and full in flavour.

Strawberry - Medium

Strawberry Wine is a medium, well-balanced fruit wine with a delicate strawberry aroma. This fruit wine is a traditional summer favourite that's best served chilled.

Rhubarb Mead - Sweet

Rhubarb mead showcases the delicious pairing of honey and rhubarb.

Christmas Mead - Medium Sweet

A very special festive and rich honey wine. The finest mead gently blended with Christmas spices to make the perfectly smooth and mellow Christmas tippie.

Waking the Demon - Sweet

Made especially for the popular rock band Bullet for My Valentine. This Mead is sweet & moreish, with rich, deep honey flavours.

Venom Mead - Off Dry

A second mead made especially for the popular rock band Bullet For My Valentine. This Spiced Mead is a honey ferment flavoured with spice, hints of cinnamon and nutmeg for a tingling sensation and a bite of heat. Very moreish.

Pubs, pints, people.

2 Free Pints...

...when you join CAMRA at this festival.

Membership with CAMRA helps preserve great beer, cider, perry, pubs and clubs for future generations. As a thank you, you'll also get...

- £30 worth of Real Ale vouchers
- Quarterly BEER magazine
- Free or discounted entry to 100s of Beer Festivals
- Partner benefits and discounts
- CAMRA shop discounts
- Online learning and resources

Join CAMRA today
Visit camra.org.uk/join

*Redeemable at over 1200 pubs - £30 for single memberships - £40 for joint membership. See www.camra.org.uk/vouchers for details. A single 50p voucher may be redeemed at a time against the value of a single selected pint of real ale, cider, or perry.

NEW!
Pub and beer search tools online with every membership. See camra.org.uk today!



FESTIVAL FOOD

Free Range Jane

Back for 2025 Free Range Jane will be serving mouthwatering fried chicken burgers with vegan options available.



Crusty Pie

With their scrumptious pies, pasties, sausage rolls, pork scratchings and sweet treats, Crusty Pie are a stalwart of the festival.

Mr Bombay

What beer festival would be complete without a bit of spiciness! Enjoy Mr Bombay's tasty Indian street food, including samosas, bhajis and wraps.

Real Meat Sausage Co

Paul and his team will be serving up appetising roast pork, beefburgers, sausages and chips.

Berlin Doner

Nikhil and his team are back again at Berlin Doner. They will be serving delicious meat & vegetarian gyro and souvlaki.

Himalayan Dumplings

Returning to Ealing Beer Festival this year, Himalayan Dumplings will be serving up a tempting range of dumplings, including vegan options. Curry is also on the menu, with choices of mince beef or chickpea.

MUSIC

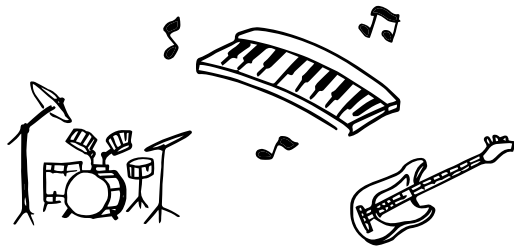
Wed 8pm Harmonica Lewinski

Thur 4pm Acoustic Apes

Fri 4pm Tim Staffell & Friends

Fri 8pm Cruisin' Mooses

Sat 2pm Threaded Lightning



FESTIVAL FEEDBACK AND SURVEY



Please visit the online survey to provide feedback on your festival experience and optionally vote for your beer/cider of the festival.

<https://ebf.camra.org.uk/survey/>

 **The Questors**
THEATRE



Your local venue for drama, comedy,
live music, children's theatre and more...



Plus ticketholders
can enjoy a drink in
the Grapevine Bar -
CAMRA West
Middlesex Club of
the Year 2025

Find us at 12 Mattock Lane, Ealing W5
5 mins walk from Ealing Broadway
www.questors.org.uk



GREAT BRITISH BEER FESTIVAL

BIRMINGHAM
2025

DISCOVER BOLD FLAVOURS



BOOK NOW NEC BIRMINGHAM 5-9 AUG 25
WWW.GREATBRITISHBEERFESTIVAL.CO.UK